



# Report examples in Archi

Publication date: 8 sep 2014

**Purpose:**

Give insight in the possibilities of the report templates.

**Document properties:**



# 1. Report example

This document describe an example of the use of report templates. At this moment the following keywords can be used for special purposes and markup features.

Model related	View related	Element related
<input type="text" value="_Revision"/>	<input type="text" value="(blank)"/>	<input type="text" value="(blank)"/>
<input type="text" value="_Review"/>	<input type="text" value="_Item"/>	<input type="text" value="_Item"/>
<input type="text" value="_Bug"/>	<input type="text" value="_Bug"/>	<input type="text" value="_Bug"/>
<input type="text" value="_ToDo"/>	<input type="text" value="_ToDo"/>	<input type="text" value="_ToDo"/>
<input type="text" value="_HRef"/>	<input type="text" value="_HRef"/>	<input type="text" value="_HRef"/>
<input type="text" value="_Req"/>	<input type="text" value="_Req"/>	<input type="text" value="_Req"/>
<input type="text" value="_Question"/>	<input type="text" value="_Question"/>	<input type="text" value="_Question"/>
<input type="text" value="_Info"/>	<input type="text" value="_Info"/>	<input type="text" value="_Info"/>
<input type="text" value="_Bibliography"/>	<input type="text" value="_HideConcept"/>	<input type="text" value="_Link"/>
<input type="text" value="_Project"/>	<input type="text" value="_Project"/>	<input type="text" value="_XML"/>
		<input type="text" value="_Bibliography"/>
		<input type="text" value="_Target"/>

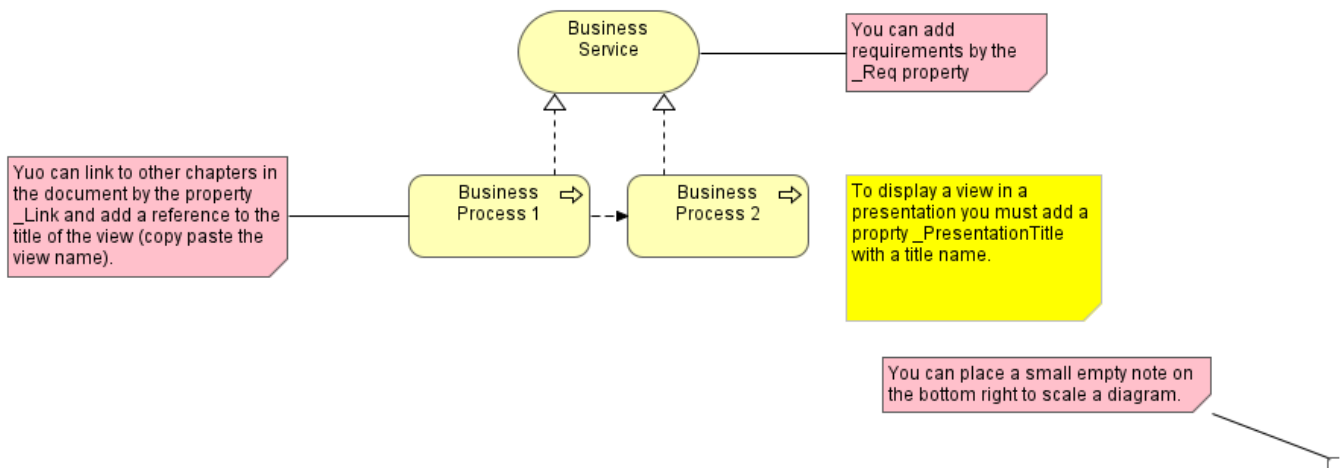
  

Presentation
<input type="text" value="_PresentationTitle"/>

- **(blank)**: Empty property name can be used for additional text
- **\_Item**: Can be used to create an bullet list
- **\_Revision**: Used for add an revision marker at the begin of a document (document properties)
- **\_Review**: Review marker for add an review comment at the begin of a document (document properties)
- **\_Bug**: Used for mark a bug of faulty situation
- **\_ToDo**: Used the create an actionpoint
- **HRef**: Can be used to addd an reference to an external resource, the resource must be specified as URI, like http:// or file://
- **\_Req**: To add a requirement label
- **\_Question**: Define an question for example a stakeholder. In case of the use of using a a pipe symbol (|), the text before the pipe symbol is displayed in bold.
- **\_Link**: Used to create a link to an other view in the samen document
- **\_Info**: Adds an info marker
- **\_HideConcept**: Used to hide one or more concepttypes in a view. use one property per concept type
- **\_Bibliography**: Exist of two components, one reference including a description in a object and one that the describes the bibliography in the model properties. The report engine verify if a reference exist in the model properties.
- **\_Target**: Add a target to an object
- **\_Project**: Exist of two components, one in a view that include the view in a project scope and one in the model properties that show a description or a purpose in the front page.

# 1.1 Business Services

A business service is defined as a service that fulfills a business need for a customer (internal or external to the organization).



## Business Process 1

A business process is defined as a behavior element that groups behavior based on an ordering of activities. It is intended to produce a defined set of products or business services.

[1.2 Baseline situation](#)

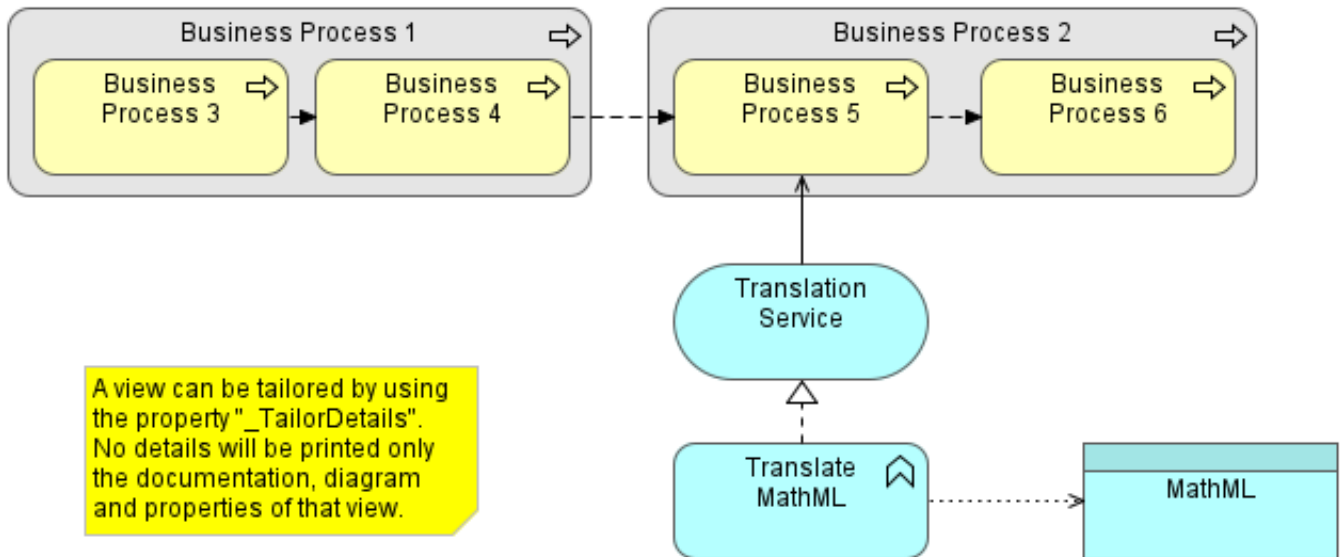
## Business Process 2

A business process is defined as a behavior element that groups behavior based on an ordering of activities. It is intended to produce a defined set of products or business services.

## Business Service

- A business service exposes the functionality of business roles or collaborations to their environment.
- The functionality of a business service is accessed through one or more business interfaces.

## 1.2 Baseline situation



### Business Process 1

A business process is defined as a behavior element that groups behavior based on an ordering of activities. It is intended to produce a defined set of products or business services.

### Business Process 2

A business process is defined as a behavior element that groups behavior based on an ordering of activities. It is intended to produce a defined set of products or business services.

### Business Process 3

A business process is defined as a behavior element that groups behavior based on an ordering of activities. It is intended to produce a defined set of products or business services.

❓ Who is the owner of this process?

### Business Process 4

A business process is defined as a behavior element that groups behavior based on an ordering of activities. It is intended to produce a defined set of products or business services.

🐛 This process is too complex!

### Business Process 5

A business process is defined as a behavior element that groups behavior based on an ordering of activities. It is intended to produce a defined set of products or business services.

### Business Process 6

A business process is defined as a behavior element that groups behavior based on an ordering of activities. It is intended to produce a defined set of products or business services.

### MathML

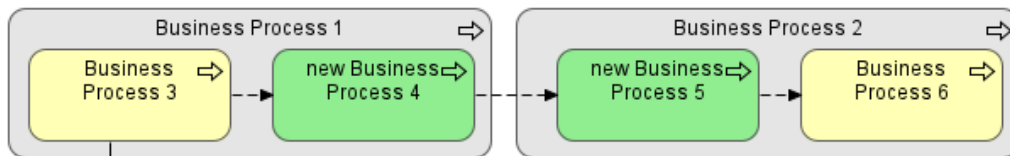
Store the Math expression in MathML 2.0 format.

```
MathML specification
<math xmlns="http://www.w3.org/1998/Math/MathML">
  <semantics>
    <mrow>
      .....
    </mrow>
    <annotation-xml encoding="MathML-Content">
      <apply>
        ....
      </apply>
    </annotation-xml>
    <annotation encoding="Latex">
      ....
    </annotation>
  </semantics>
</math>
```

🔗 MathML Version 2.0 (Second Edition) specification: <http://www.w3.org/TR/MathML2/>



## 1.3 Target situation



You can add questions that needs to be addressed by adding \_Question in the property tab.

You can print only a part of complete repository by defining "\_Project" property with an appropriate name for that project for every view you wanted.

After that you can print only the project pages by defining a Jasper report title that start with Project: following by the name you yosen for the \_Project property.

You can add more than one \_Project property.

✖ This view contains a faulty description

### Business Process 1

A business process is defined as a behavior element that groups behavior based on an ordering of activities. It is intended to produce a defined set of products or business services.

🔗 1.2 Baseline situation

### Business Process 2

A business process is defined as a behavior element that groups behavior based on an ordering of activities. It is intended to produce a defined set of products or business services.

### Business Process 3

A business process is defined as a behavior element that groups behavior based on an ordering of activities. It is intended to produce a defined set of products or business services.

❓ Who is the owner of this process?

### Business Process 6

A business process is defined as a behavior element that groups behavior based on an ordering of activities. It is intended to produce a defined set of products or business services.

### new Business Process 4

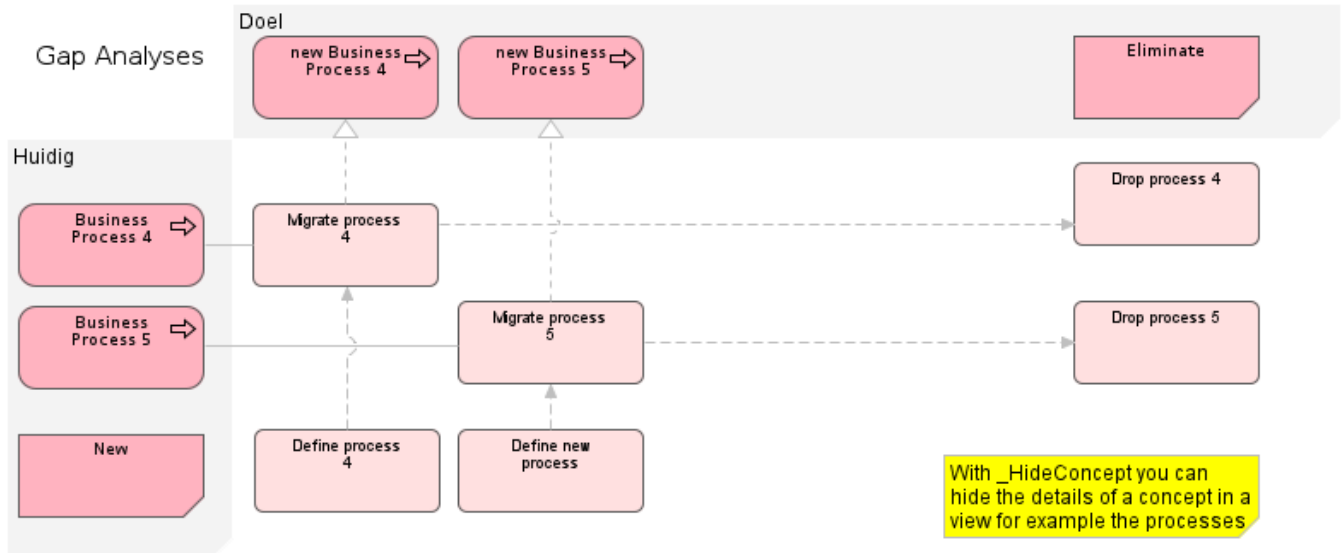
A business process is defined as a behavior element that groups behavior based on an ordering of activities. It is intended to produce a defined set of products or business services.

🔗 [http://en.wikipedia.org/wiki/Business\\_process](http://en.wikipedia.org/wiki/Business_process)

### new Business Process 5

A business process is defined as a behavior element that groups behavior based on an ordering of activities. It is intended to produce a defined set of products or business services.

## 1.4 Gap analyses



### Define new process

Just an activity.

### Define process 4

Just an activity.

### Drop process 4

Just an activity.

### Drop process 5

Just an activity.

### Migrate process 4

Just an activity.

### Migrate process 5

Just an activity.



## Bibliography:

[SNGGLTX]

School of Physics & Astronomy (2011). *SnuggleTeX (1.2.2)* Online:  
<http://www2.ph.ed.ac.uk/snuggletex/documentation/overview-and-features.html>